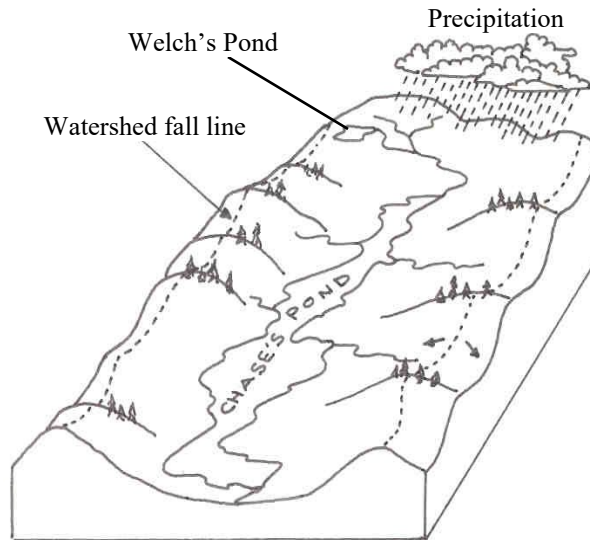


## 2021 RULES OF USE

- 4 WHEEL VEHICLES (TRUCKS, JEEPS ETC.) ARE PROHIBITED.
- NO MOTORCYCLES, DIRT BIKES OR MOTOR DRIVEN CYCLES.
- ATV'S BY PERMIT ONLY.
- NO GASOLINE POWERED ENGINES ALLOWED ON THE PONDS AT ANYTIME.
- STAY ON MARKED TRAILS.
- STAY OUT OF CLOSED AREAS.
- THE MAKING OF NEW TRAILS IS STRICTLY PROHIBITED.
- NO BOATING , SWIMMING, OR CAMPING
- NO FISHING, OPEN WATER OR ICE FISHING.
- NO FIRES OF ANY KIND AT ANY TIME.
- NO TREE CUTTING.
- NO LITTERING, CARRY OUT WHAT YOU CARRY IN.
- THE MAXIMUM SPEED ON ALL TRAILS IS 15M.P.H.
- PET OWNERS MUST FOLLOW THE TOWN OF YORK ANIMAL CONTROL ORDINANCE AND THE YORK & KITTERY WATER DISTRICT PUBLIC WATER SUPPLY ANIMAL CONTROL POLICY. PLEASE PICK UP YOUR PET WASTE.
- NO TREE STANDS.
- HUNTING IS ALLOWED.
- OBEY ALL SIGNS.
- NO ORGANIZED GROUP ACTIVITIES.
- NO ROCK CLIMBING, RAPPELLING.
- THE POSSESSION OR CONSUMPTION OF ALCOHOL IS PROHIBITED.
- NO RECREATIONAL USES ON THE PONDS AT ANY TIME, OPEN WATER OR ICE.

## What is a watershed?

A watershed is the area of land where all of the water that is under it or drains off of it goes into the same place, in this case **CHASE'S POND**.



The protection of Public Water Supplies will take on more significance as the Environmental Protection Agency and State Drinking Water Program's rules will be requiring the Districts to do more testing and reporting on our raw water quality. Our challenge will be to continue to allow limited recreational use of this protected area without this use interfering with our goal to enhance the raw water quality. The Districts intent is to continue to allow limited recreational use, to acquire as much of the watershed land as possible, to continue the source water monitoring program and to increase patrolling of this region.

# YORK WATER DISTRICT KITTERY WATER DISTRICT PUBLIC WATER SUPPLY WATERSHED PROTECTION AREA RULES OF USE 2021



YORK WATER DISTRICT  
86 WOODBRIDGE RD  
YORK, MAINE 03909  
363-2265  
GARY STEVENS  
WATERSHED  
PATROL OFFICER  
451-8107  
EMAIL  
[watershed@yorkwaterdistrict.org](mailto:watershed@yorkwaterdistrict.org)



YORK POLICE DEPT  
9 HANNAFORD DR  
YORK , MAINE 03909  
363-4444  
[www.yorkpolice.org](http://www.yorkpolice.org)



KITTERY WATER DISTRICT  
17 STATE RD  
KITTERY, MAINE 03904  
439-1128  
[www.kitterywater.org](http://www.kitterywater.org)

[www.yorkwaterdistrict.org](http://www.yorkwaterdistrict.org)

YORK WATER DISTRICT  
RESOURCE PROTECTION OFFICE  
1-207-363-2265 FAX 207-351-8522

## PET OWNERS

All dogs **MUST** be on a leash at all times.  
You **MUST** carry and use a waste disposal bag for the purpose of picking up and removing pet waste from the property.

**VIOLATIONS WILL  
RESULT IN SUMMONS.**

# NO MATTER WHERE YOU LIVE... YOU LIVE IN A WATERSHED

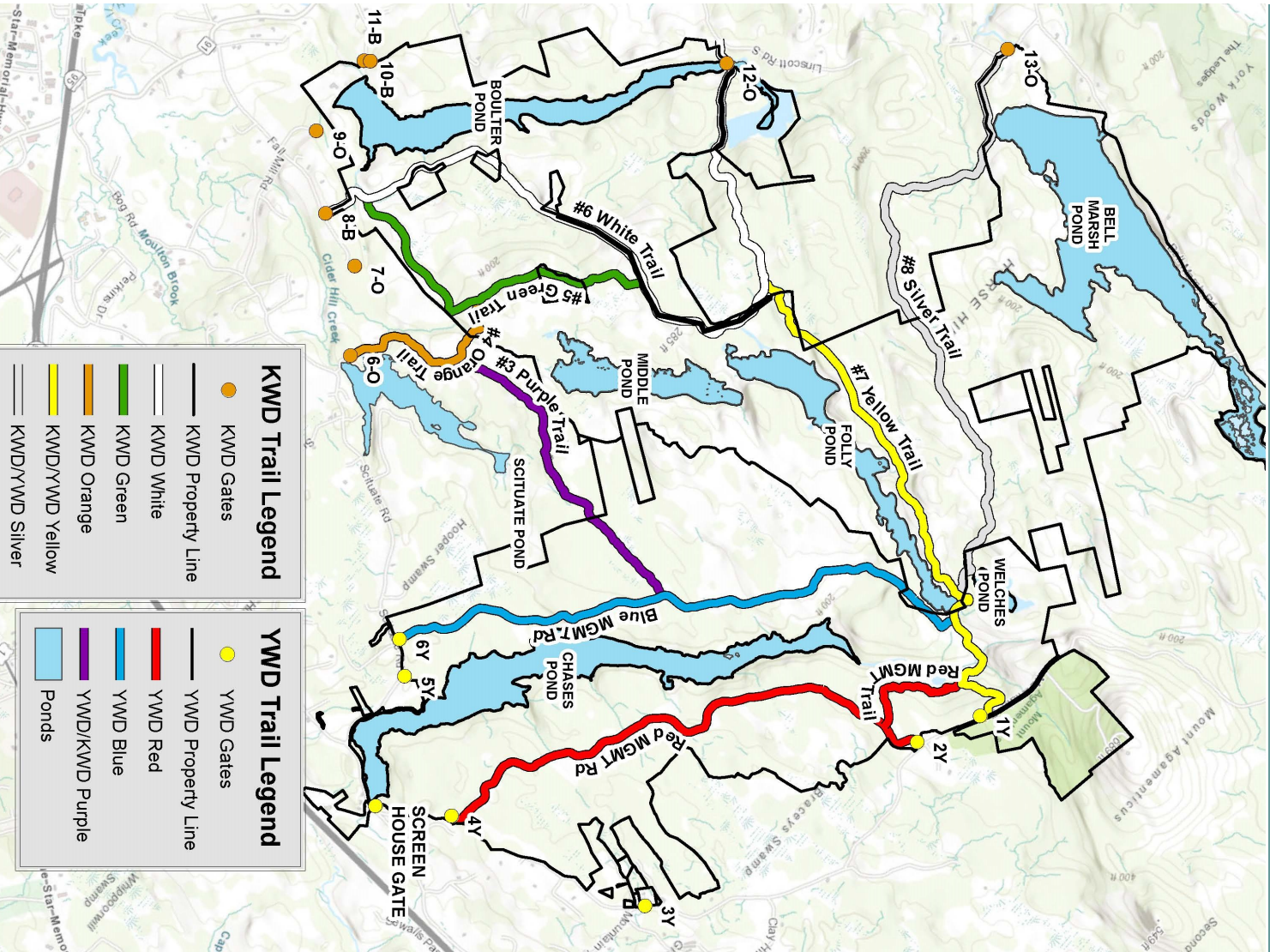
Recreational uses are prohibited on these ponds. The following ponds are public water supplies, they provide drinking water to thousands of people in York, Kittery, and Eliot. Please help us protect this valuable resource

CHASES POND  
WELCHES POND  
FOLLY POND  
MIDDLE POND  
BELL MARSH RESERVOIR  
BOULTER POND

**RECREATIONAL USES ARE PROHIBITED ON ALL OF THESE PONDS**

The property owned by the York and Kittery Water Districts surrounding these Ponds are **PRIVATE PROPERTY.**

It is a privilege to pass across this private land. This privilege can be revoked at any time and for any reason by the York Water and/or Kittery Water Districts.



**KWD Trail Legend**

●	KWD Gates
—	KWD Property Line
—	KWD White
—	KWD Green
—	KWD Orange
—	KWD/YWD Yellow
—	KWD/YWD Silver

**YWD Trail Legend**

●	YWD Gates
—	YWD Property Line
—	YWD Red
—	YWD Blue
—	YWD/KWD Purple
■	Ponds

**WHEN PARKING YOUR VEHICLE PLEASE KEEP VALUABLES OUT OF SITE, AND DOORS LOCKED FOR YOUR PROTECTION**

**THIS AREA IS REGULARLY PATROLLED BY THE YORK POLICE DEPT. IF YOU ARE ON AN ATV AND YOU DO NOT HAVE A PERMIT YOU WILL BE ASKED TO LEAVE!**

# WATERSHED TRAIL MAP